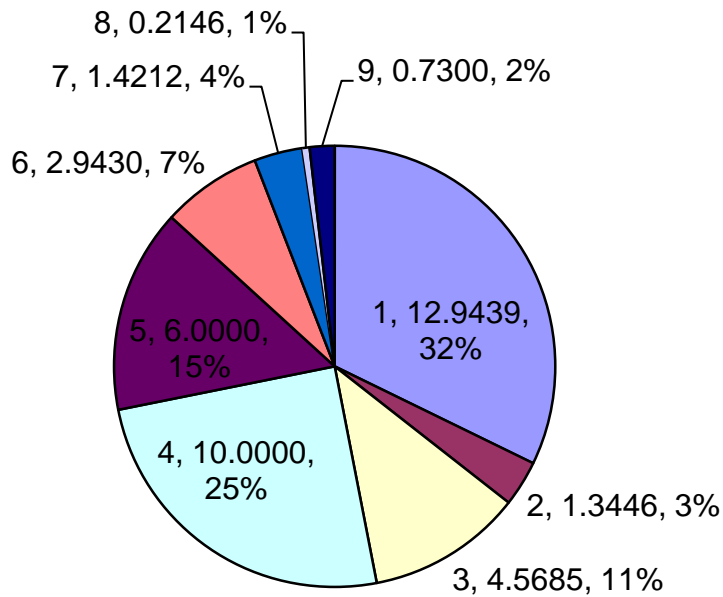


TAX RATES TENTATIVE 2009/10

1	City of New Baltimore	12.9439
2	City Library	1.3446
3	Macomb County	4.5685
4	Anchor Bay School District	10.0000
5	State Education Tax	6.0000
6	Macomb Int. School District	2.9430
7	Macomb Community College	1.4212
8	Huron Clinton Metropolitan	0.2146
9	SMART/Zoo/Veterans Admin	0.7300

TOTAL 40.1658



The above represents Homestead Properties only. Commercial and Industrial Properties are taxed an additional 18 mills yearly for Anchor Bay School District Operations.

